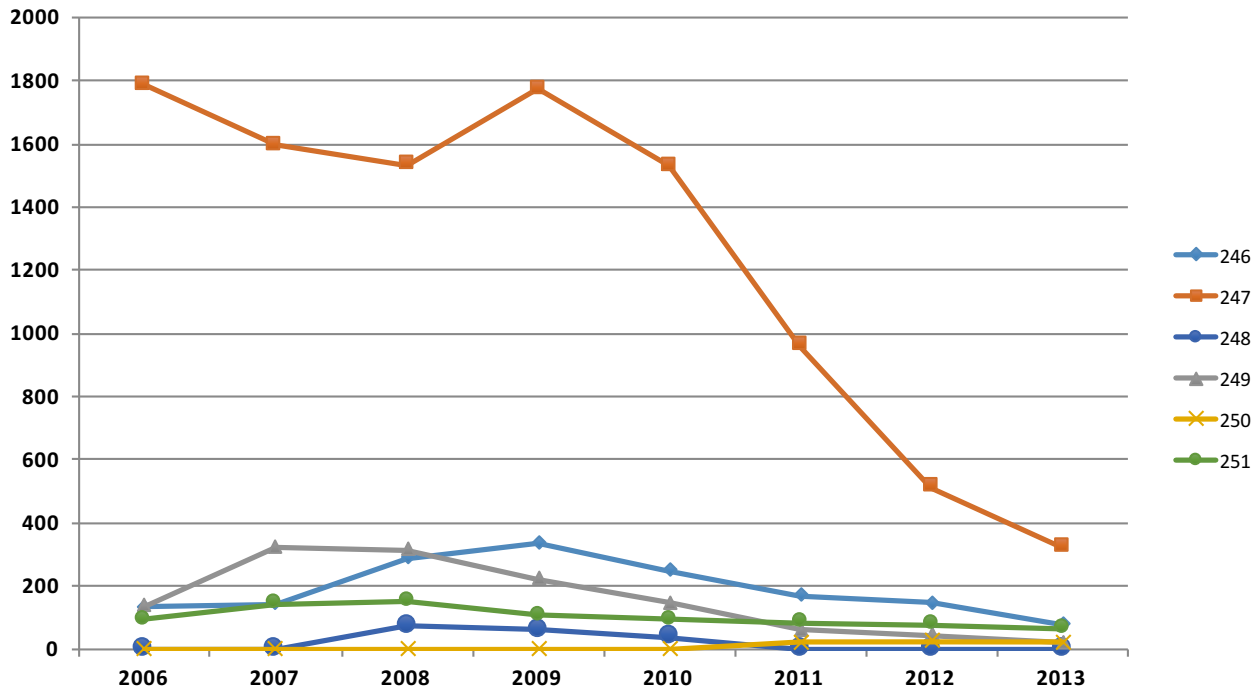


Percutaneous Cardiovascular Procedures at King's Daughters Medical Center, 2006 to 2013

MSDRG	2006	2007	2008	2009	2010	2011	2012	2013
246 246 PTCA w Drug-eluting Stent w MCC or 4+	135	145	289	336	248	169	148	78
247 247 PTCA w Drug-eluting Stent wo MCC	1787	1595	1533	1774	1529	961	513	322
248 248 PTCA w Non-drug Stent w MCC or 4+	-	-	75	60	40	-	-	-
249 249 PTCA w Non-drug Stent wo MCC	136	323	316	222	147	61	44	22
250 250 PTCA wo Stent or AMI, w MCC	-	-	-	-	-	23	24	23
251 251 PTCA wo Stent or AMI, wo MCC	94	143	152	107	96	85	78	65
Total:	2152	2206	2365	2499	2060	1299	807	510

Angioplasties at King's Daughters Medical Center by MSDRG Type



P Hasselbacher, KHPI, 2015

Comment:

This data summarizes the number of discharges from King's Daughters Medical Center for all 6 PTCA MSDRGs.

Empty cells above depict years where the numbers for all Kentucky were too small to report. (<20)

PTCA= Percutaneous Transluminal Coronary Angioplasty

MSDRG = Medical Severity Diagnosis Related Groups. These are the procedure codes hospitals assign at discharge and for reimbursement.

MCC= Major complication or comorbidity.

4+ indicates 4 or more vessels or stents involved.

AMI= Acute myocardial infarction (heart attack).

Between the years 2009 and 2013, there was a 80% decrease in the total number these six procedures.

Data from the Kentucky Hospital Association.

Compiled by P Hasselbacher, MD
 Kentucky Health Policy Institute
 Sept 14, 2015